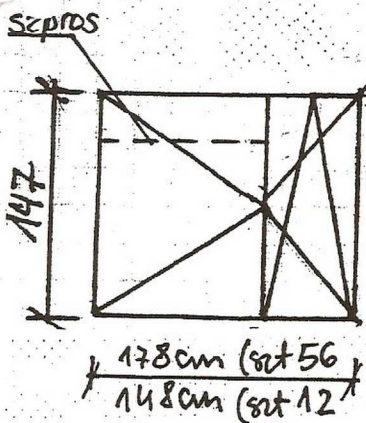
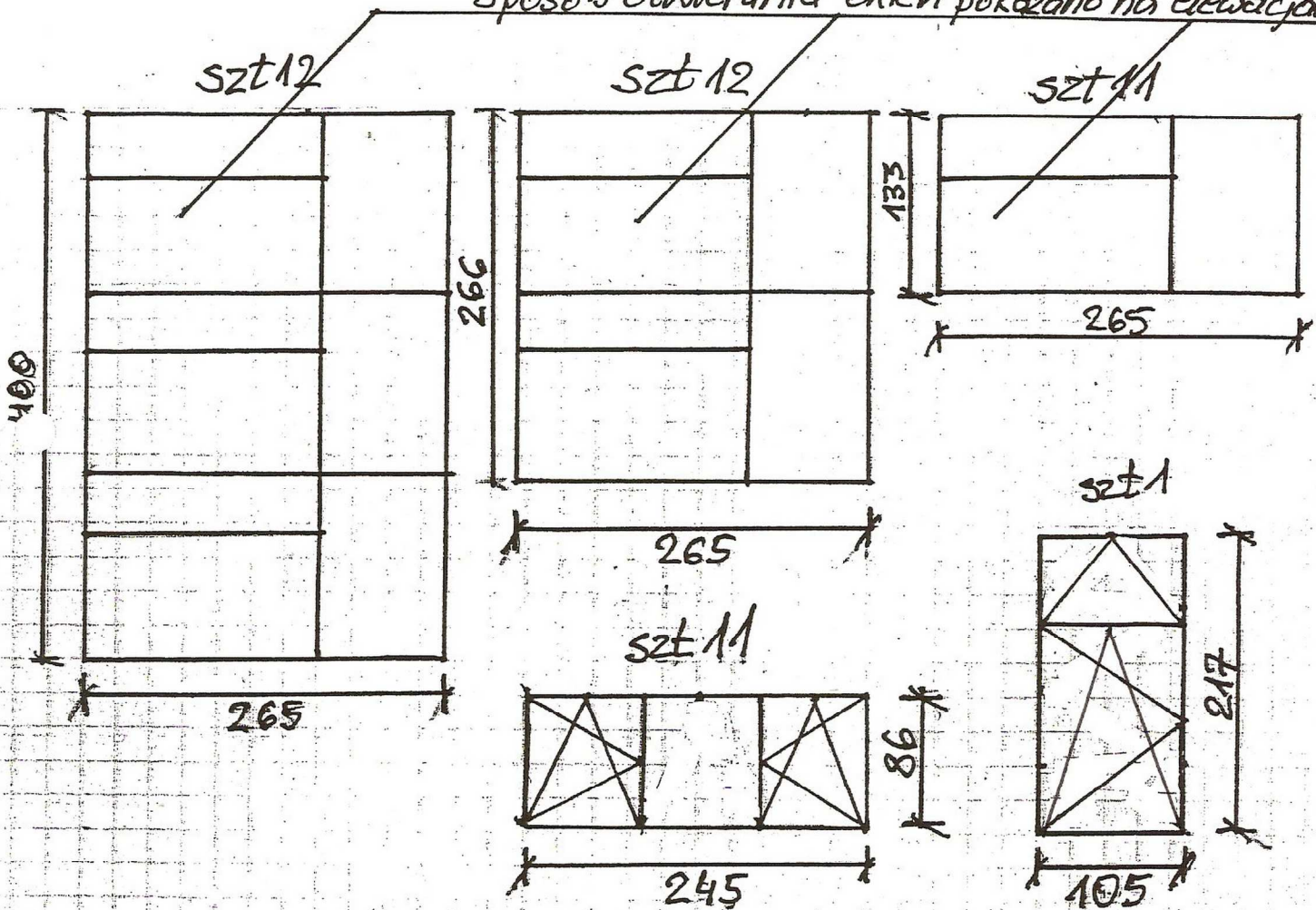
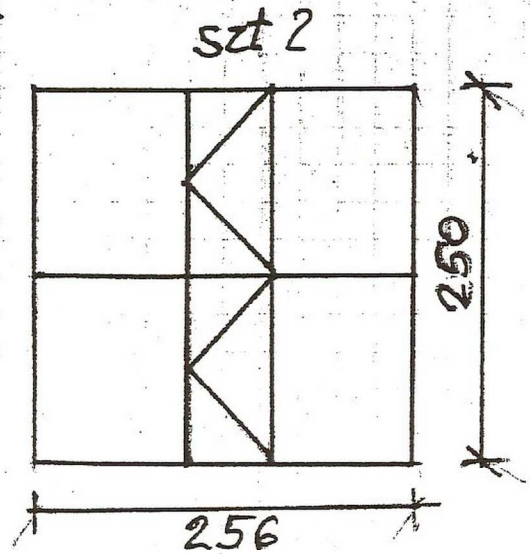
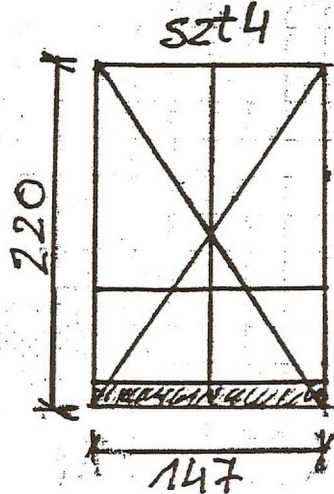


Zespół Szkół Nr 1 przy ul. Romera 2 w Szczecinie
 Wymiana okien w Sali gimnastycznej i Internacie
SALA GIMNASTYCZNA

sposób otwierania okien pokazano na elewacjach

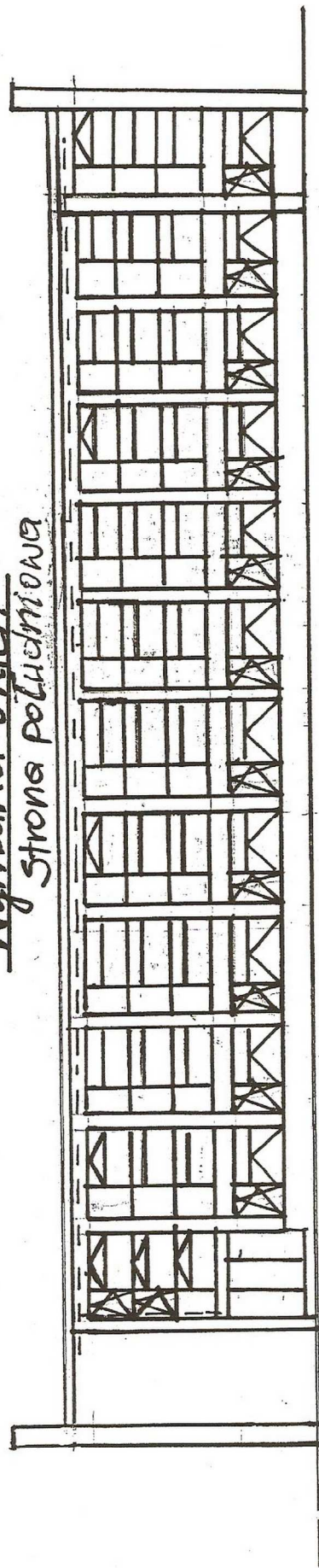


INTERNAT



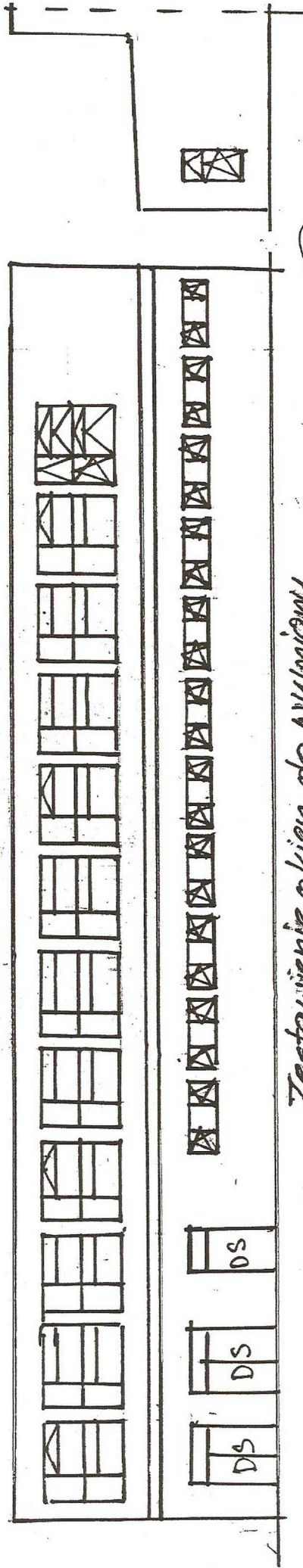
Sala gimnastyczna Zespołu Szkół Nr 1 przy ul. Romana 2 w Szczecinie

Wymiana okien
 i strona południowa



Strona południowa

strona zach.



Zestawienie okien do wymiany





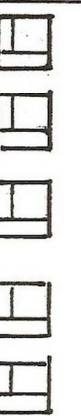



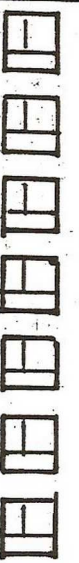

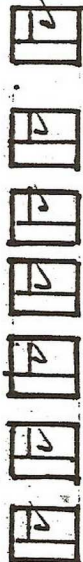

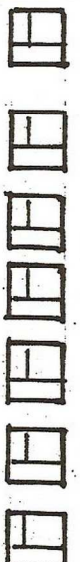
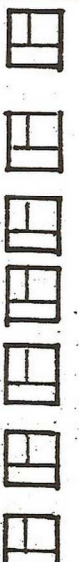


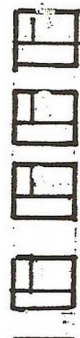



1. Okno 265x400 - szt 12
2. Okno 265x133 - szt 11
3. Okno 265x266 - szt 12
4. Okno 245x86 - szt 11
5. Okno 105x217 - szt 1

Koszorys, Naczory Budowlane
 mgr inż. Stefan Pieńkowski
 Upr. bud. 780/Sz/83
 ul. Wrzesńska 13
 NIP 965-114-62-41 Regon 810082241
 tel. (091) 4691 800

Internat Zespołu Szkół Nr 1 przy ul. Romera 2 w Szczecinie

Wymiana okien na IV piętrze

strona wschodnia

																			
---	---	---	---	--	---	---	---	---	--	--	--	--	--	---	---	---	---	---	--

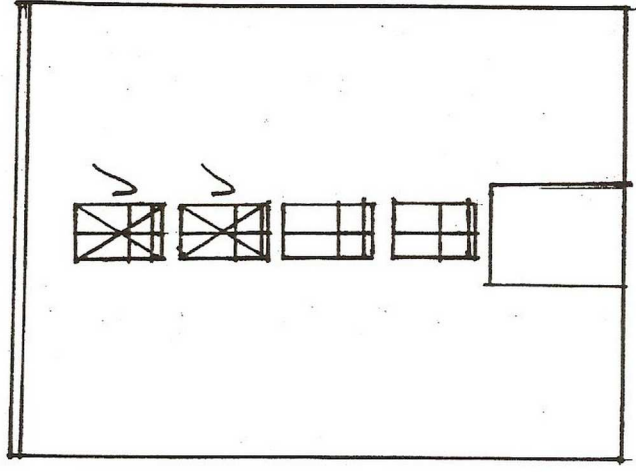
Zestawienie okien do wymiarów (zaznaczone v)
1) Okna 178 x 147 cm - 24 szt

Kosztyływ, Nadzory Budowlane
mgr inż. Stefan Pienkowski
Upr. bud. 190/52/83
70-884 Szczecin, ul. Wrzesińska 13
NIP 986-114-82-24, Regon 810092241
tel. (091) 46 97 500

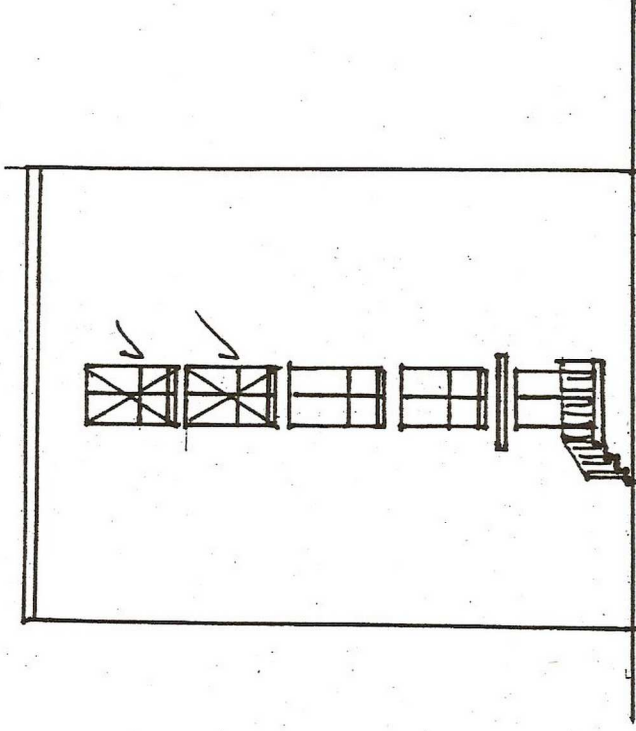
Internat Zespołu Szkół Nr 1 przy ul. Romera 2 w Szczecinie

Wymiana okien na III i IV piśmie

strona północna



strona południowa



Zestawienie okien do wymiarów (zaznaczonych)
Okno 147x220cm - szt 4

Kosztorys, Nadzory Budowlane
Inż. inż. Sławimir Pińkowski
Upr. bud. 248/Sz/83
70-835 Szczecin, Al. Wrzesińska 13
NIP 955-114-62-24, Regon 810082241
tel. (091) 45 91 500